

Quality Used Equipment Trade Stocklist



VISIT WWW.BMHQUE.CO.UK FOR

LIVE STOCK UPDATES

REGULAR ONLINE AUCTIONS

WEEKLY SPECIAL OFFERS

ZOOM FACILITY TO VIEW HIGH QUALITY PHOTOS

UP TO DATE PRICES



November 2024

JAMES WRIGHT

UK Trade Sales South, Export and Eire

T: 01543 430040

M: 07801 049483

E: [\[email protected\]](#)

PHIL HARDWARE

UK Trade Sales Central England and Export

T: 01543 430040

M: 07590446951

E: [\[email protected\]](#)

IAN MARSHALL

UK Trade Sales North, Export and Northern
Ireland

T: +44 (0) 1543 430040

M: 07966340043

E: [\[email protected\]](#)



| Type | Power | Capacity | Make | Model | Serial No | Mast | | S/Shift | Year | Hours | Price | Description |
|---------------------------|-------|----------|--------------|------------------|-------------|------|--|---------|------|-------|-------|-------------|
| 3 Wheeler Electric | E | 2000 | Yale | ERP20VT | G807B12228S | 4600 | | FFTL | Y | 2018 | 4053 | Call |
| 4 Wheeler Electric | E | 3000 | Hyster | E3.0XN (Pyroban) | A268N18613P | 5215 | | FFTL | Y | 2016 | 4499 | Call |
| Counterbalance Lift Truck | D | 1600 | Yale | GDP16VX | D810B02960S | 4450 | | FFTL | Y | 2018 | 6690 | Call |
| Counterbalance Lift Truck | D | 2500 | Hyster | H2.5XT | A380B04730S | 3790 | | STD | Y | 2018 | 4402 | Call |
| Counterbalance Lift Truck | D | 2920 | Hyster | H3.5FT | P177B07592S | 4605 | | FFL | Y | 2018 | 2517 | Call |
| Counterbalance Lift Truck | D | 3500 | Yale | GDP35VX | C875B02957N | 4605 | | STD | Y | 2015 | 6188 | Call |
| Counterbalance Lift Truck | D | 3500 | Yale | GDP35VX | D875B07479U | 4605 | | STD | Y | 2020 | 2557 | Call |
| Counterbalance Lift Truck | G | 2240 | Hyster | H2.5XT LPG | A380B04489S | 4950 | | FFTL | Y | 2018 | 3358 | Call |
| Counterbalance Lift Truck | G | 2500 | Hyster | H2.5FT | P177B05734R | 4950 | | FFTL | N | 2017 | 5732 | Call |
| Counterbalance Lift Truck | G | 2500 | Hyster | H2.5FT | P177B05740R | 4950 | | FFTL | Y | 2017 | 3710 | Call |
| Counterbalance Lift Truck | G | 2500 | Hyster | H2.5XT | A380B04300S | 4950 | | FFTL | Y | 2018 | 1847 | Call |
| Counterbalance Lift Truck | G | 2500 | Yale | GLP25MX | A390B02777S | 4950 | | FFTL | Y | 2018 | 4710 | Call |
| Counterbalance Lift Truck | G | 2500 | Yale | GLP25MX | A390B03404S | 4950 | | FFTL | Y | 2018 | 5701 | Call |
| Counterbalance Lift Truck | G | 2500 | Yale | GLP25VX | D875B05201S | 4950 | | FFTL | Y | 2018 | 6242 | Call |
| Counterbalance Lift Truck | G | 2500 | Yale | GLP25VX | D875B05204S | 4950 | | FFTL | Y | 2018 | 5891 | Call |
| Counterbalance Lift Truck | G | 2500 | Hyster | H2.5FT | P177B06872S | 3790 | | STD | Y | 2018 | 4587 | Call |
| Counterbalance Lift Truck | G | 3500 | Yale | GLP35VX | D875B03007P | 4610 | | STD | Y | 2016 | 4349 | Call |
| Counterbalance Lift Truck | G | 3500 | Yale | GLP35VX | D875B05380S | 4615 | | FFTL | Y | 2018 | 12272 | Call |
| Counterbalance Lift Truck | G | 3500 | Yale | GLP35VX | D875B05573S | 3810 | | FFL | Y | 2018 | 8580 | Call |
| Counterbalance Lift Truck | G | 3500 | Hyster | H3.5FT | P177B07419S | 6415 | | FFL | Y | 2018 | 18865 | Call |
| Counterbalance Lift Truck | G | 3500 | Hyster | H3.5FT | P177B09488T | 4615 | | FFTL | Y | 2019 | 5140 | Call |
| Counterbalance Lift Truck | G | 4000 | Hyster | H4.0FT5 | U005B04180S | 4415 | | FFTL | Y | 2018 | 2576 | Call |
| Counterbalance Stacker | E | 1500 | Yale | MC15 | B860T01567L | 2972 | | STD | | 2013 | 90 | Call |
| Flexi | E | 2000 | Narrow Aisle | FLEXI G4 AC | 147305 | 8220 | | FFTL | Y | 2014 | 5603 | Call |
| Flexi | E | 2000 | Narrow Aisle | AC1200 | 178573 | 8610 | | FFTL | Y | 2017 | 24454 | Call |
| Flexi | E | 2000 | Narrow Aisle | AC1200 | 178574 | 8610 | | FFTL | Y | 2017 | 11679 | Call |
| Flexi | E | 2000 | Narrow Aisle | FLEXI AC1200 | 189247 | 6600 | | FFTL | Y | 2018 | 10721 | Call |
| Flexi | E | 2000 | Narrow Aisle | FLEXI AC1200 | 189248 | 6600 | | FFTL | Y | 2018 | 9560 | Call |
| Flexi | E | 2000 | Narrow Aisle | FLEXI G4 AC | 189251 | 8610 | | FFTL | Y | 2018 | 21778 | Call |
| Flexi | E | 2000 | Narrow Aisle | FLEXI AC1200 | 200355 | 8610 | | FFTL | Y | 2020 | 566 | Call |
| Low Level Order Picker | E | 2000 | Hyster | LO2.0 | E444T04453T | | | STD | | 2019 | 515 | Call |
| Low Level Order Picker | E | 2000 | Yale | MO20 | E857T06857W | | | STD | | 2022 | 0 | Call |
| Pedestrian Stacker | E | 1600 | Yale | MS16 | D852T05530T | 3490 | | FFL | N | 2019 | 536 | Call |
| Reach Truck | E | 1000 | Hyster | R1.0E | A432T01555T | 6750 | | FFTL | Y | 2019 | 5391 | Call |

BACK WINDOW BROKEN

OPTI-FLEET

LOOSE MAST

LOOSE MAST

LOOSE MAST

LOOSE MAST AND FORKS

METER CHANGE AT 6785 HOURS - APRIL-24

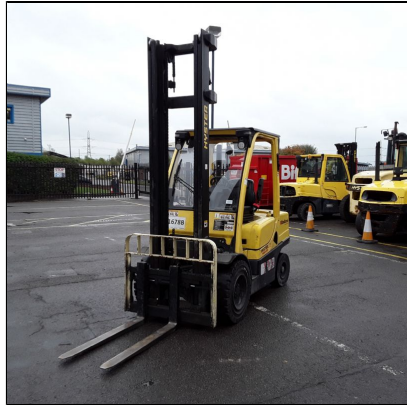
CANCELLED NEW STOCK ORDER



| Type | Power | Capacity | Make | Model | Serial No | Mast | | S/Shift | Year | Hours | Price | Description |
|--------------------------|-------|----------|-------------|-----------------------------|--------------|-------|------|---------|------|-------|-------|-----------------|
| Reach Truck | E | 1000 | Hyster | R1.0E | A432T01556T | 6750 | FFTL | Y | 2019 | 5462 | Call | |
| Reach Truck | E | 1400 | Hyster | R1.4 (PYROBAN ZONE 2) | D435T02560N | 5000 | FFL | Y | 2015 | 1190 | Call | |
| Reach Truck | E | 1400 | Hyster | R1.4 (PYROBAN) | D435T02561N | 5000 | FFL | Y | 2015 | 2123 | Call | |
| Reach Truck | E | 1400 | Hyster | R1.4 | D435T03836P | 6000 | FFTL | Y | 2016 | 3022 | Call | |
| Reach Truck | E | 1400 | Yale | MR14 | D849T04516R | 5500 | FFTL | Y | 2017 | 6613 | Call | |
| Reach Truck | E | 1400 | Yale | MR14 | D849T05037S | 7000 | STD | Y | 2018 | 11927 | Call | |
| Reach Truck | E | 1400 | Yale | MR14 | D849T05038S | 7000 | FFL | Y | 2018 | 10628 | Call | |
| Reach Truck | E | 1400 | Yale | MR14 | D849T05279S | 5000 | FFTL | Y | 2018 | 3479 | Call | |
| Reach Truck | E | 1400 | Hyster | R1.4 | D435T07581V | 6500 | FFTL | Y | 2021 | 1290 | Call | POOR CONDITION |
| Reach Truck | E | 1600 | Hyster | R1.6 | D435T04190P | 5500 | FFTL | Y | 2016 | 2652 | Call | |
| Reach Truck | E | 1600 | Yale | MR16N | D849T04002R | 5000 | FFTL | Y | 2017 | 4653 | Call | |
| Reach Truck | E | 1600 | Hyster | R1.6 | D435T06097S | 5500 | FFTL | Y | 2018 | 1440 | Call | |
| Reach Truck | E | 1600 | Hyster | R1.6 | D435T07052U | 6500 | FFTL | Y | 2020 | 3904 | Call | |
| Reach Truck | E | 2000 | Yale | MR20HD | D849T03689P | 9500 | FFTL | Y | 2016 | 11466 | Call | |
| Reach Truck | E | 2000 | Yale | MR20HD | D849T03942R | 10750 | FFTL | Y | 2017 | 3893 | Call | |
| Scrubber Drier | E | | Nilfisk | BR755C (Pyroban) | 4000123480 | | STD | | 2016 | 50 | Call | |
| Scrubber Drier | E | | Hako | B30 | 771520808944 | | STD | | 2018 | 70 | Call | |
| Stand In Pallet Truck | E | 2000 | Hyster | P2.0SFBW | D439T06448R | | | | 2017 | 5683 | Call | |
| Stand In Pallet Truck | E | 2000 | Hyster | P2.0S (Cold Store) | E439T01851V | | STD | | 2022 | 1560 | Call | Cold store spec |
| Teletruk | E | 3000 | JCB | TLT30-19E | 2841719 | 6400 | Boom | Y | 2020 | 7013 | Call | |
| Teletruk | E | 3000 | JCB | TLT30-19E | 2841726 | 6400 | Boom | Y | 2020 | 5952 | Call | |
| Tug | E | 981 | Mastermover | SM100 | 92423 | | STD | | 2017 | | Call | *SPARE BATTERY* |
| Tug | E | 1962 | Mastermover | MT2000AC | 13157 | | STD | | 2016 | 98 | Call | |
| Tug | E | 3000 | Bradshaw | PT300 | T30134AC | | STD | | 2016 | 143 | Call | |
| Tug | E | 7000 | Hyster | T7.0 HS3 | A489X01641S | | STD | | 2018 | 2628 | Call | |
| Tug | E | 8010 | Bradshaw | T800 | 60984 | | STD | | 2017 | 702 | Call | EX-DLS Unit |
| Walk Behind Pallet Truck | E | 1600 | Hyster | P1.6 | A418T05682S | | STD | | 2018 | 2264 | Call | |
| Walk Behind Pallet Truck | E | 1600 | Yale | MP16 | A428T10166U | | STD | | 2020 | 383 | Call | |

Hyster H3.5FT

Call



Type: Counterbalance Lift Truck
Serial: P177B06693S
Power: Diesel
Capacity (kg): 3500
Mast (m): 4605
Mast Type: STD
SS: Yes
Build: 2018
Hours: 3444

Hyster H3.5FT

Call



Type: Counterbalance Lift Truck
Serial: P177B06552S
Power: Diesel
Capacity (kg): 3500
Mast (m): 5405
Mast Type: STD
SS: Yes
Build: 2018
Hours: 3198

Hyster LO2.0

Call



Type: Low Level Order Picker
Serial: E444T04456T
Power: Electric
Capacity (kg): 2000
Mast (m):
Mast Type: STD
SS: No
Build: 2019
Hours: 518

Hyster H3.5FT

Call



Type: Counterbalance Lift Truck
Serial: P177B06668S
Power: Diesel
Capacity (kg): 3500
Mast (m): 4605
Mast Type: STD
SS: Yes
Build: 2018
Hours: 3178

Yale GLP35VX

Call



Type: Counterbalance Lift Truck
Serial: D875B05597S
Power: Gas
Capacity (kg): 3500
Mast (m): 3810
Mast Type: FFL
SS: Yes
Build: 2018
Hours: 9930

RAISED OPERATOR CABIN

Yale GLP35VX

Call



Type: Counterbalance Lift Truck
Serial: D875B05653S
Power: Gas
Capacity (kg): 3500
Mast (m): 3810
Mast Type: FFL
SS: Yes
Build: 2018
Hours: 8055

RAISED OPERATOR CABIN

Yale GLP25VX

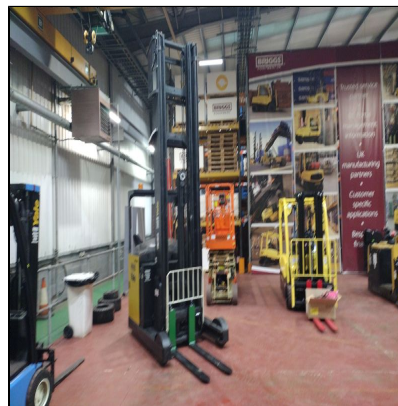
Call



Type: Counterbalance Lift Truck
Serial: D875B03369P
Power: Gas
Capacity (kg): 2500
Mast (m): 3790
Mast Type: STD
SS: Yes
Build: 2016
Hours: 3802

Yale MR20HD

Call



Type: Reach Truck
Serial: C849T07494K
Power: Electric
Capacity (kg): 2000
Mast (m): 10802
Mast Type: FFL
SS: Yes
Build: 2012
Hours: 6017

Yale ERP18VTMWB (non runner)

Call



Type: 3 Wheeler
Electric
Serial: G807B11565S
Power: Electric
Capacity (kg): 1800
Mast (m): 4900
Mast Type: FFTL
SS: Yes
Build: 2018
Hours: 4415

EXTREMELY POOR CONDITION *NON RUNNER* *TRIED SLAVE BATTERY
MULTIPLE FAULT CODES SHOWING*

Yale ERP18VTMWB (non runner)

Call

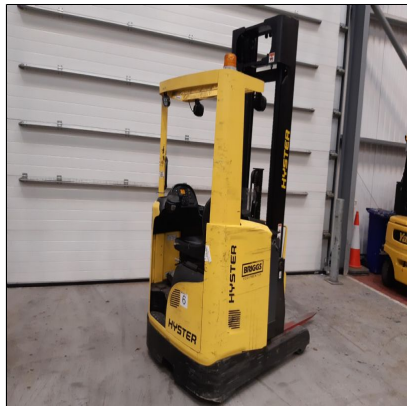


Type: 3 Wheeler
Electric
Serial: G807B11563S
Power: Electric
Capacity (kg): 1800
Mast (m): 4900
Mast Type: FFTL
SS: Yes
Build: 2018
Hours: 4152

EXTREMELY POOR CONDITION *NON RUNNER* *TRIED SLAVE BATTERY
MULTIPLE FAULT CODES SHOWING*

Hyster R1.0E

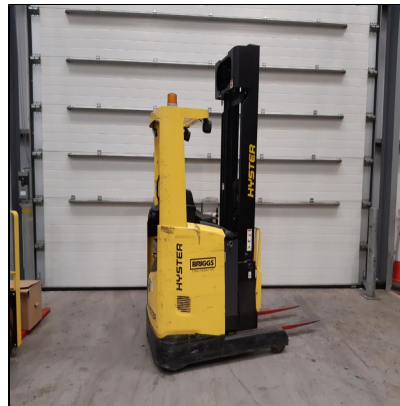
Call



Type: Reach Truck
Serial: A432T01555T
Power: Electric
Capacity (kg): 1000
Mast (m): 6750
Mast Type: FFTL
SS: Yes
Build: 2019
Hours: 5391

Hyster R1.0E

Call



Type: Reach Truck
Serial: A432T01556T
Power: Electric
Capacity (kg): 1000
Mast (m): 6750
Mast Type: FFTL
SS: Yes
Build: 2019
Hours: 5462

Hyster R1.6

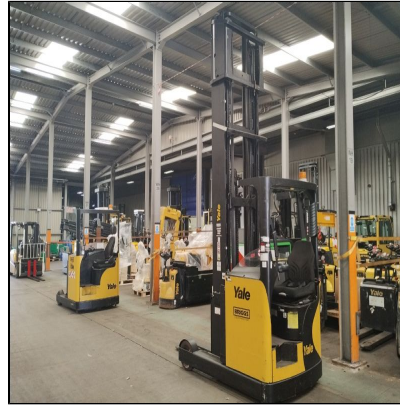
Call



Type: Reach Truck
Serial: D435T07052U
Power: Electric
Capacity (kg): 1600
Mast (m): 6500
Mast Type: FFTL
SS: Yes
Build: 2020
Hours: 3904

Yale MR20HD

Call



Type: Reach Truck
Serial: C849T07917L
Power: Electric
Capacity (kg): 2000
Mast (m): 10078
Mast Type: FFTL
SS: Yes
Build: 2013
Hours: 5396

**Briggs Equipment UK,
Orbital 5a, Orbital Way, Cannock, WS11 8XW**

